

IMPORTANT NUMBERS

EMERGENCIES		
Police/fire	911	24-hour
MDEQ Pollution Alert Systems (PEAS)	800-292-4706	24-hour
NON-EMERGENCIES		
Livingston County Health Department Drain Office	517-546-9858 517-546-0040	8 a.m.-5 p.m.
Macomb County	877-679-4337	24-hour
Monroe County Drain Commissioner	734-240-3115	24-hour
Oakland County	248-858-0931	24-hour
St. Clair County	877-504-SWIM	24-hour
Washtenaw County	734-222-3800	8:30 a.m.-5 p.m.
Wayne County	888-223-2363	24-hour
Local IDEP Coordinator:		
Local Soil Erosion Control Agency:		

Developed by the Southeast Michigan Regional IDEP Work Group

Available for download at:

<http://www.allianceofroutegcommunities.com/PDFs/technical/IDEP%20Tip%20Card2.pdf>

HOW TO SPOT ILLICIT DISCHARGES A Tip Card for Municipal Staff



An illicit discharge is any discharge containing polluting material, such as sediment, nutrients, oil and bacteria. These discharges can drain to lakes and streams via storm drains. The communities in Southeast Michigan are required to prevent illicit discharges from entering storm water. You can do your part by notifying the appropriate agency when you spot a potential illicit discharge.

WHAT SHOULD YOU REPORT?

- Spills and contamination to lakes, rivers and streams
- Suspicious dumping to catch basins or waterways
- Unusual discharges from pipes
- Sewage on the ground or draining to surface water
- Large number of dead fish in waterways
- Failing or leaky septic systems
- Polluted runoff from storage piles or dumpsters to catch basins or waterways
- Sewage, detergent, chemical, petroleum or rotten egg odors
- Soil erosion from construction sites

WHAT ARE THE SIGNS OF AN ILLICIT DISCHARGE?

SANITARY SEWER DISCHARGE

Signs:

- Sanitary debris
- Staining on pipe
- Soap suds
- Gray or discolored water
- Smells like sewage, rotten eggs or detergents

Contact:

IDEP coordinator and/or DPW



Soap suds



Gray staining



Broken sanitary sewer

FAILED SEPTIC SYSTEMS

Signs:

- Overgrown or wet patch of grass
- Cheater pipe to ditch
- Soap suds
- Gray or discolored water
- Smells like sewage, rotten eggs or detergents

Contact:

Health Department and/or IDEP coordinator



Overgrown septic field



Cheater pipe from septic field

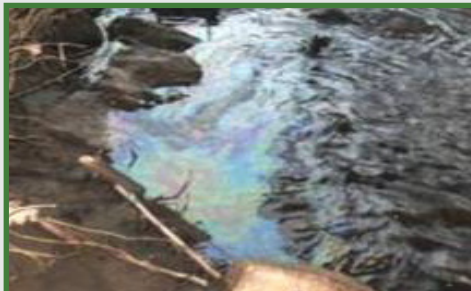
ILLEGAL DUMPING, SPILLS OR FLOOR DRAIN CONNECTIONS

Signs:

- Oil sheen
- Stained sediment, rocks or vegetation
- Smells like petroleum or chemicals

Contact:

IDEP coordinator or MDEQ



Oil sheen

INDUSTRIAL DISCHARGES

Signs:

- Discolored water or vegetation
- Smells like petroleum or chemicals

Contact:

IDEP coordinator and/or DPW



White foam

AGRICULTURAL RUNOFF, FERTILIZERS OR SANITARY SEWER WASTE

Signs:

- Algae growth near drain outlet or in a ditch

Contact:

IDEP coordinator, DPW and/or Drain Office



Excessive algae

SOIL EROSION FROM CONSTRUCTION SITES

Signs:

- Bare soils or banks with no soil erosion control fencing
- Muddy discharge from an outfall

Contact:

Local soil erosion control agency (local community or county)



Soil erosion