

# Lake St. Clair Cooperative Invasive Species Management Area (CISMA)

A collaborative of local, county, regional, state and federal agencies, non-governmental organizations, and large property owners established in 2014 to plan, strategize, secure funding and control the spread of invasive species around Lake St. Clair.

**Invasive Species:** An alien species whose introduction does or is likely to cause economic or environmental harm or harm to human health. Invasive plants and animals are the second greatest threat to biodiversity after habitat loss.

**Focused Management Areas:** Sites of intensive control activity by multiple CISMA members to accelerate improvements.

## Priority Invasive Species

Phragmites australis



Black Swallow-Wort



Japanese Knotweed



European Frogbit



Flowering Rush



### Lake St. Clair CISMA Members

- Chesterfield Township

Clay Township

Clinton River Watershed Council

Community Foundation of St. Clair County

Friends of Wetzel State Recreation Area

Grosse Point Farms

Harrison Township

Huron Clinton Metroparks

Ira Township

Macomb County Department of Roads

Macomb County Health Department

Macomb County Public Works Office

Michigan Department of Natural Resources

Michigan Department of Transportation

Michigan Nature Association

Michigan Sea Grant

Natural Resource Conservation Service

Oakland County Water Resources Office

Oakland University

Office of the Great Lake – Michigan Department of Environmental Quality

Macomb County Department of Planning and Economic Development
- SEMCOG

Shelby Township

Six Rivers Regional Land Conservancy

St. Clair County Drain Office

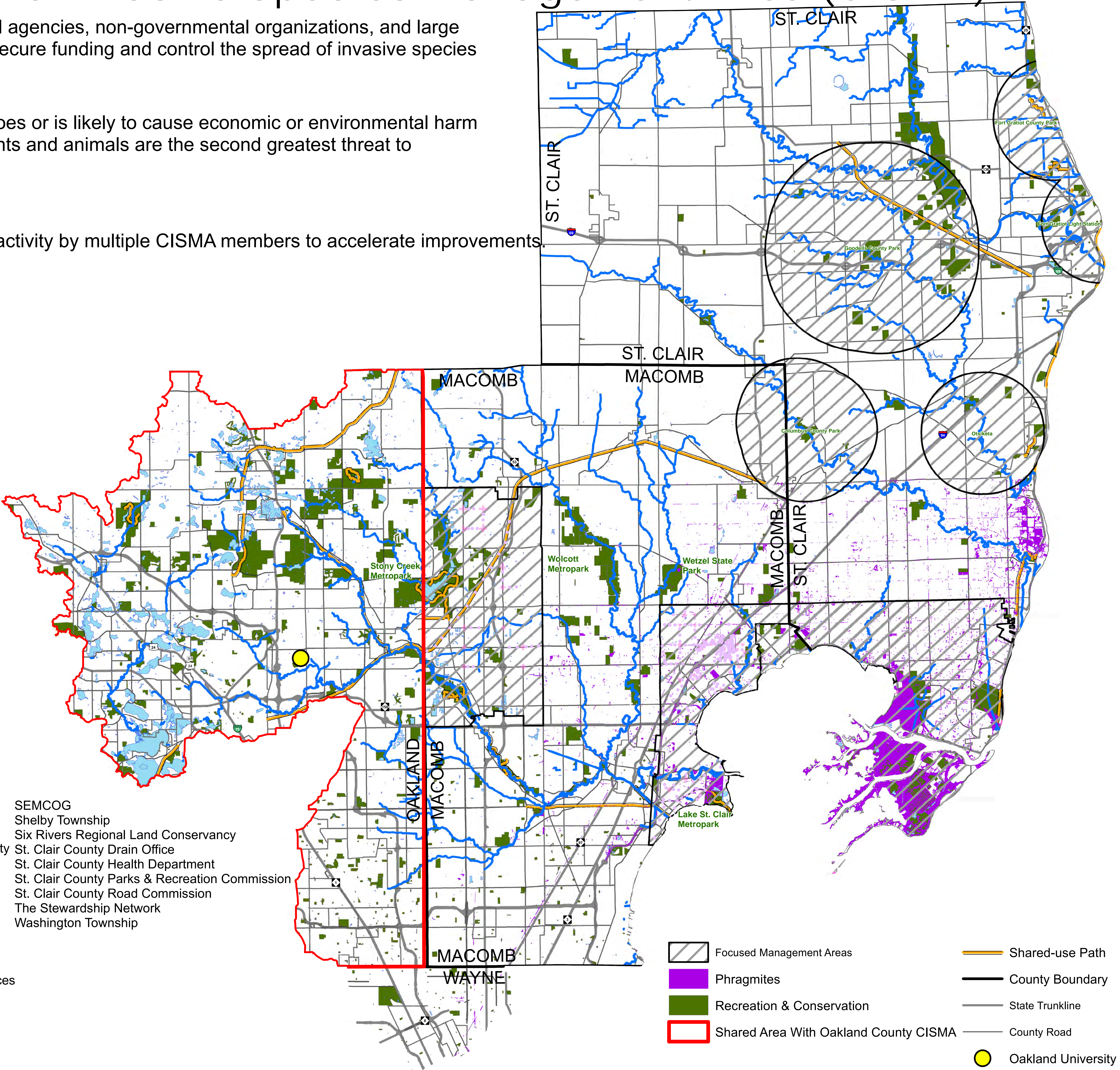
St. Clair County Health Department

St. Clair County Parks & Recreation Commission

St. Clair County Road Commission

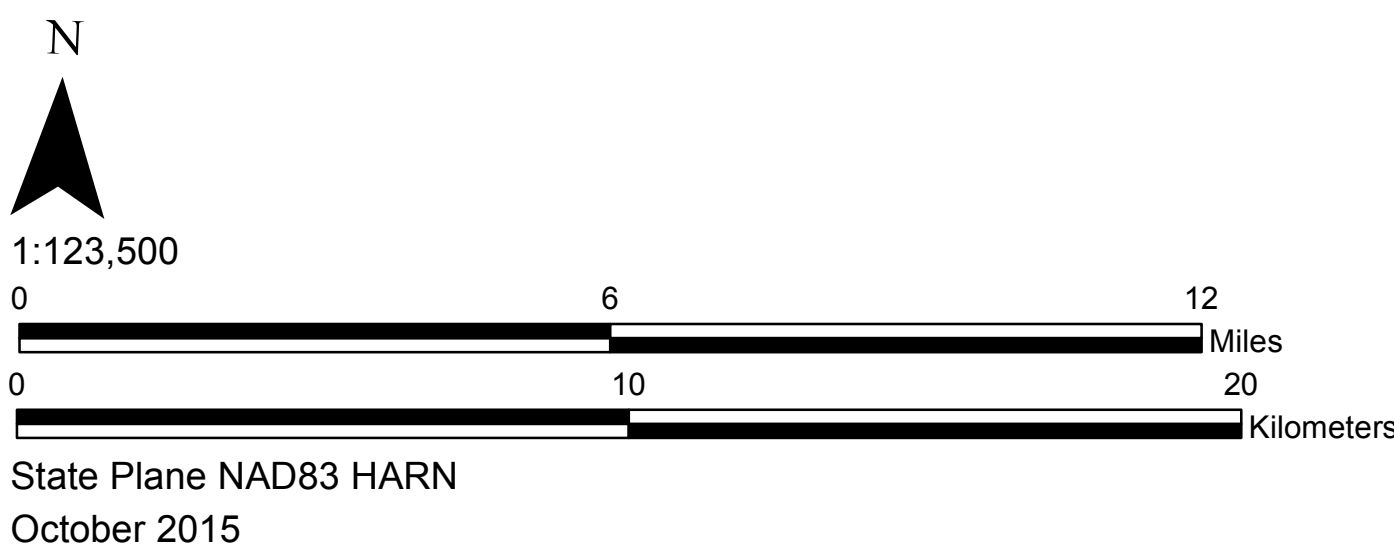
The Stewardship Network

Washington Township



Southeast Michigan Council of Governments  
1001 Woodward Avenue, Suite 1400, Detroit, Michigan 48226-1904  
Phone (313) 961-4266, Fax (313) 961-4869  
www.semco.org

Copyright: SEMCOG, 2015



I:\Staff\Jones\GIS\Water\Bills\_Projects\Macomb\_StClair\_Clinton.mxd