

Maps with Updated Data



2050 Regional Development Forecast Explorer maps.semco.org/Forecast

SEMCOG's 2050 Regional Development Forecast provides a long-range and comprehensive view of future demographic and economic changes in Southeast Michigan. The map was updated to include data by Traffic Analysis Zone, Intermediate School District and School District.



Traffic Volume maps.semco.org/TrafficVolume

SEMCOG's traffic volume map represents Average Annual Daily Traffic (AADT) for roads in Southeast Michigan that are eligible for Federal Funds. The map was updated to include 2022 traffic volume data. The data can be filtered by year, and the years available are 2010 to 2022.



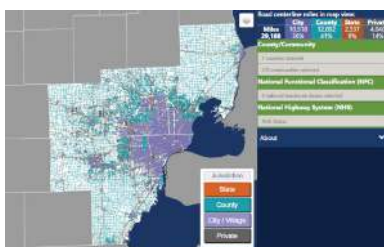
Pavement Condition maps.semco.org/PavementCondition

SEMCOG's pavement condition map uses the PASER rating criteria. The 2022 condition shows the latest available rating for the road segment. The map was updated to include 2022 pavement condition. The data can be filtered by year, and the years available are 2003 to 2022.



Crash Location maps.semco.org/CrashLocations

SEMCOG's crash location map represents locations of reported crashes on roads in Southeast Michigan. The map was updated to include 2022 crash locations. The data can be filtered by year and the available years are 2018 to 2022.



Road Jurisdiction maps.semco.org/RoadJurisdiction

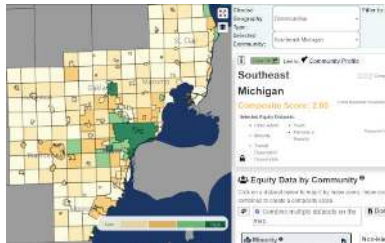
SEMCOG's interactive Road Jurisdiction Map shows jurisdictional ownership, National Highway System (NHS), and National Functional Classification (NFC) of roads that make up the Southeast Michigan transportation network. The map was updated to display 2022 road data from the MDOT Roads and Highways dataset.

Maps with Updated Data



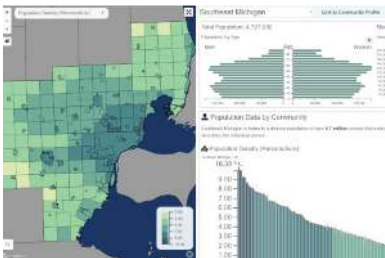
Bicycle and Pedestrian Counts
maps.semcog.org/BikeAndPedCounts

SEMCOG’s Bicycle and Pedestrian Count map represents the aggregation of individual bicycle and pedestrian traffic studies in Southeast Michigan. The map was updated in 2022 to include the latest study locations.



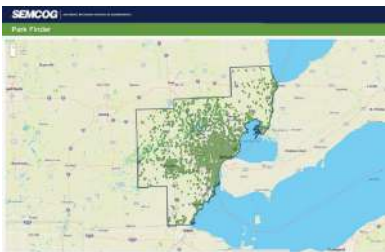
Equity Emphasis Areas
maps.semcog.org/EquityEmphasisAreas

SEMCOG’s Equity Emphasis Areas tool is an interactive application that provides a detailed summary of key demographic variables at different geographies (regional, county, community, and census tract) across the seven-county region. The map was updated with American Community Survey 2017-2021 data, as well as Justice 40 Initiative layers.



Community Explorer
maps.semcog.org/CommunityExplorer

SEMCOG’s Community Explorer tool is an interactive application that provides a detailed summary of 40 demographic and economic variables at different geographies (regional, county, community, school district, and census tract) across the seven-county region. The map was updated with American Community Survey 2017-2021 data.



Park Finder
maps.semcog.org/ParkFinder

Southeast Michigan’s ParkFinder® map and downloadable app allows you to explore the region’s recreational opportunities. This data has been collected from local recreation plans and is provided for informational use. The map was updated with the latest park data collected from recreation plans for the year 2023.