



**SEMCOG**

# Member Services



**SEMCOG**

SOUTHEAST MICHIGAN COUNCIL OF GOVERNMENTS





**Amy O'Leary**

Executive Director  
SEMCOG

### **SEMCOG Vision**

*All people in Southeast Michigan benefit from a connected, thriving region of small towns, dynamic urban centers, active waterfronts, diverse neighborhoods, premier educational institutions, and abundant agricultural, recreational, and natural areas.*

# Welcome

Hello, and welcome to SEMCOG! Your participation is invaluable to our mission of bringing together all governments in Southeast Michigan to develop regional solutions by:

- Providing insightful data analysis and direct assistance to member governments
- Promoting efficient use of resources for infrastructure investment and government effectiveness
- Developing solutions that go beyond individual local governments
- Advocating for our region in Lansing and Washington

### **Stewardship**

As the regional council of governments and designated planning organization in the areas of transportation, air and water quality, and economic development, SEMCOG brings communities together to collaborate and drive the future prosperity and sustainability for all.

### **Convening Regional Leadership**

All SEMCOG policy decisions are made by local elected leaders, ensuring that regional policies reflect the interests of member communities. Members serve on one or both of SEMCOG's policy-making bodies — the General Assembly and the Executive Committee.

### **Leveraging SEMCOG Resources and Expertise**

SEMCOG exists to help your community achieve its local goals and play a key role in the success story of Southeast Michigan.

Please consider this a guide to some of the main ways we can support you and work together. Most importantly, do not hesitate to reach out for assistance!



Scan for more info on SEMCOG member services

# Table of Contents



**Data and Maps** ..... 1



**Local Assistance** ..... 3



**Policy and Advocacy** ..... 6

- Technical Assistance
- Funding and Grants
- Planning Expertise on SEMCOG Topics
  - Economic Development
  - Parks and Recreation
  - Environment
  - Infrastructure
  - Transportation and Mobility



**Education and Engagement** ..... 7





# Data and Maps

## SEMCOG's data services include:

- Timely, community-specific data and information
- Cutting-edge mapping
- Regional and local demographics
- Tools to support master plan development
- Economic development analysis

*"SEMCOG is an important organization for local elected officials. Data about the region and local communities is crucial for making informed decisions. I have also found that networking with other SEMCOG members helps me better understand the many ways I can be responsive to what the data is telling me about my community."*



**Gwen Markham**  
Commissioner  
Oakland County

## SEMCOG maintains the following data and mapping tools to support effective planning:

### Community Profiles

Current and forecasted data for populations, households, jobs, transportation, and environment/land use data at the regional, county, and community levels. Customized profiles can be created by grouping communities together to view school districts or legislative districts.

### Interactive Mapping

Customize your viewing and downloading of equity emphasis areas, census and forecast data, traffic volumes, economic trends, broadband availability and usage, nonresidential/residential development projects, pavement and bridge conditions, tree canopy, and aerial imagery.

### Open Data Portal and GIS (Geographic Information Systems)

Easily share data and mapping information to support regional planning and modeling.

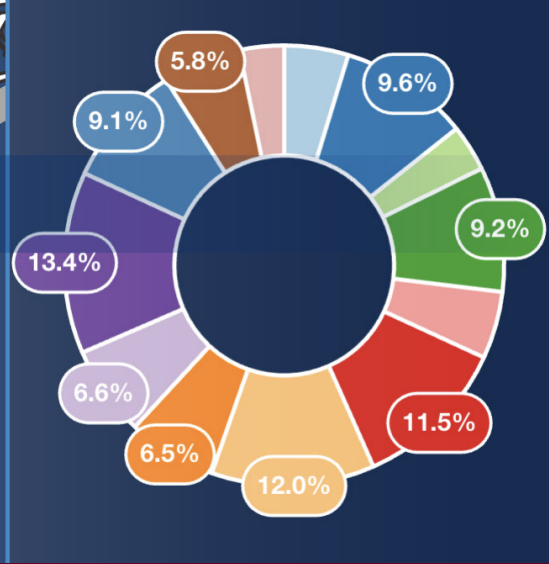
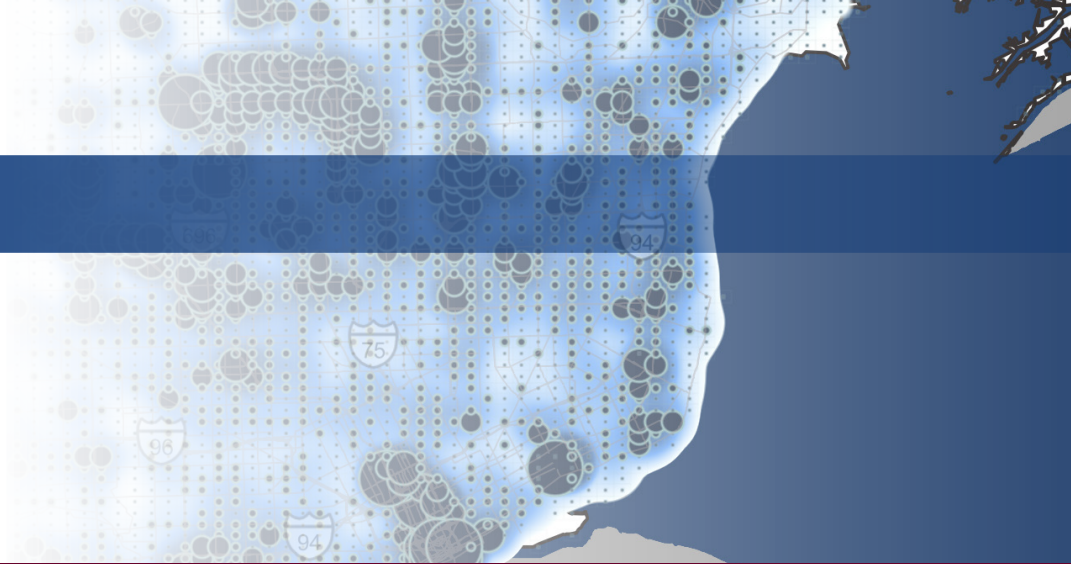
### Aerial Imagery and Land Cover

Free or discounted access to high-resolution aerial imagery, which is helpful for transportation projects, public works assessments, public safety, property assessment, environmental planning, and more.



Scan for more info on SEMCOG Data and Maps





## Location Analysis and Visitation Tool

SEMCOG recently launched a new economic development and placemaking tool to assist our local communities with understanding location and foot traffic. This tool is powered by Placer AI, and provides detailed data analysis for location, visitation, and foot traffic of key places and destinations across the region.

SEMCOG is providing this service to our member communities for three specific areas:

- Parks and Recreation Assets
- Downtowns and Commercial Corridors
- Events and Festivals

For each of these areas, this tool can provide the following analysis and results:

- Visitor and foot traffic numbers
- Pre and post-visit information
- Visits by origin zip code
- Demographic information of visitors

## Resources to explore emerging and timely topics

Broadband, Electric Vehicle Infrastructure (EV), Pedestrian and Bicycle, Flood Risk, Crash and Road Data, Asset Management Coordination, GREEN Dashboard, Water Infrastructure, and more.

### Spotlight on GREEN Dashboard

Community and regional data for tree canopy, wetlands, land conservation, recreational access, and green stormwater infrastructure





# Local Assistance

The work SEMCOG does improves the quality of the region's water, makes the transportation system safer and more efficient, revitalizes communities, and spurs economic development.



## Planning Expertise on SEMCOG Topics

### Areas of emphasis for assistance currently include:

- **Economic Development** – corridor revitalization, placemaking and downtown development, talent, and workforce development
- **Parks and Recreation** – planning for local parks and trail connections, accessibility and needs analysis, and data for 5-year recreation plans
- **Environment** – planning and implementing green infrastructure, climate resiliency and flooding, infrastructure coordination, and tree canopy and nature-based solutions data analysis
- **Infrastructure** – data and planning for pavement and bridge condition, electric vehicle infrastructure, broadband, and water infrastructure assets
- **Transportation and Mobility** – data and planning for safety, complete streets, multimodal travel, emerging technologies, transit, and pedestrian and bicycle mobility

*"The SEMCOG University Workshops have been so useful to me as a municipal leader that members of my administrative team will be attending classes as part of their professional development plans in the coming year."*



**Diane Webb**  
City Manager  
City of Wayne



Scan for more info on SEMCOG's Experience Southeast Michigan video service





### The direct services provided by staff evolve to align with local and regional projects and priorities.

- **Data and Mapping Services** – customized maps, data analysis for grants and plan updates
- **Tools to Support Community Master Plans** – Tools, maps, dashboards and datasets to support your community master plan updates
- **Direct Assistance** – transportation safety, walking and biking audits, parks and recreation and environmental planning support

### Additional guidance and support

- One-on-one technical assistance for local challenges and current planning opportunities
- Guidance on integrating regional plans and policies to maximize local outcomes
- Assistance with funding and resource opportunities
- Scholarship opportunities for grant writing and grant management workshops
- Timely information and guidance on accessing federal discretionary funding
- Letters of Support for State and federal funding requests that align with regional priorities

### Spotlight on Video Services

Tell your story! SEMCOG's Experience Southeast Michigan video service highlights your community's assets





# Local Assistance

Continued



## Funding and Grants

*"We are excited and grateful for the TAP funding awarded for the Monroe Loop Trail Project. And we are grateful to the technical support and strength of SEMCOG in being there every step of the way to realize the vision."*



**Michael Bosanac**  
Administrator and  
Chief Financial Officer  
Monroe County

### Transportation Alternatives Program (TAP) (\$10 million per year)

TAP is a competitive grant program that funds projects in several transportation emphasis areas, such as:

- Bicycle and pedestrian safety
- Trails and pathways
- Environmental mitigation and stormwater management

### Planning Assistance Program (\$500,000 per year)

SEMCOG's Planning Assistance Program provides direct funding for local planning projects that move regional plans and priorities forward and address priorities such as:

- Transportation and infrastructure equity
- Complete streets and corridor safety
- Trails and greenways
- Stormwater management
- Placemaking and active transportation

### Targeted Initiatives

#### Available funding varies year-to-year

To support implementation of Southeast Michigan's regional plans and maximize coordination with budgeted priorities of the State of Michigan and federal partners, SEMCOG administers funding programs for:

- Transportation safety audits and planning
- Local road condition data collection
- Green infrastructure implementation
- Carbon reduction and transportation congestion mitigation



Scan for more info on grant opportunities





# Policy and Advocacy

## An advocate in Lansing and Washington

As the advocate for Southeast Michigan in Lansing and Washington, D.C., SEMCOG amplifies the voice of local government. SEMCOG regularly engages with State and federal partners, providing assistance in addressing challenges and making connections for local governments to discuss with these agencies.

- **SEMCOG Legislative Policy Platform** – recommendations are developed based on data and in balance with the needs of all people who live in Southeast Michigan. The platform, adopted on a biannual basis in alignment with legislative sessions, reflects the consensus of the region's local government and education leaders.
- **Legislative District Maps** – an up-to-date resource with easy-to-find contact information for each of Southeast Michigan's State and federal legislators.
- **Advocacy** – engagement with State and federal legislators, agencies, and officials, advocating for funding and policy positions representing the region.
- **Regulatory** – representing the interests of local governments to State committees and rule-making bodies.

*Our region's success depends on engagement with State and federal partners. SEMCOG's role cannot be overstated, as I have seen firsthand the care and consideration the staff take to represent our collective priorities.*



**Frank Viviano**  
Supervisor  
Macomb Township



Scan for more info on policy and advocacy



# Education and Engagement

SEMCOG facilitates the sharing and exchange of information with members and between members at a variety of in-person and remote workshops, General Assembly meetings, committee and task force meetings, and webinars. All meetings and training sessions are free to members.

*"It is important for our educators to be engaged in regional conversations and decisions. SEMCOG policies and programs support the growth and preparedness of our educational institutions and the students they serve."*



**Diana McKnight-Morton**  
Trustee  
Washtenaw Community College

**Free training opportunities on a variety of topics of interest to elected leaders in government & education and staff have recently included:**



**2050 Regional Transportation Plan (RTP) Visioning Session**



**Educational workshops**



Scan for more info on education and engagement opportunities





**Southeast Michigan GREEN (Growing Resilience, Equity, and Economy with Nature) kickoff meeting**



**Infrastructure Coordination Workshop**

*"The SEMCOG staff is an all-star team. My staff and I find value in the programming as well as the networking opportunities with our colleagues from around the region."*



**Eric Sabree**  
Treasurer  
Wayne County

## Spotlight on Regional Update

Members are automatically subscribed to our bi-weekly e-newsletter on what is happening at SEMCOG and throughout Southeast Michigan. All are free to view past issues and subscribe at [semcog.org/news-and-events/media](http://semcog.org/news-and-events/media).



# Contact Us

## Amy O'Leary

Executive Director

313-324-3350

[oleary@semcog.org](mailto:oleary@semcog.org)

## Dr. Sheryl Theriot

Director

External Affairs

313-319-2235

[theriot@semcog.org](mailto:theriot@semcog.org)

## Amy Malmer

Manager

Membership

313-324-3308

[malmer@semcog.org](mailto:malmer@semcog.org)

## Information Center

313-961-4266

[infocenter@semcog.org](mailto:infocenter@semcog.org)

## SEMCOG

**Southeast Michigan  
Council of Governments**

1001 Woodward Ave., Suite 1400  
Detroit, MI 48226

[www.semcog.org](http://www.semcog.org)

## SEMCOG Members

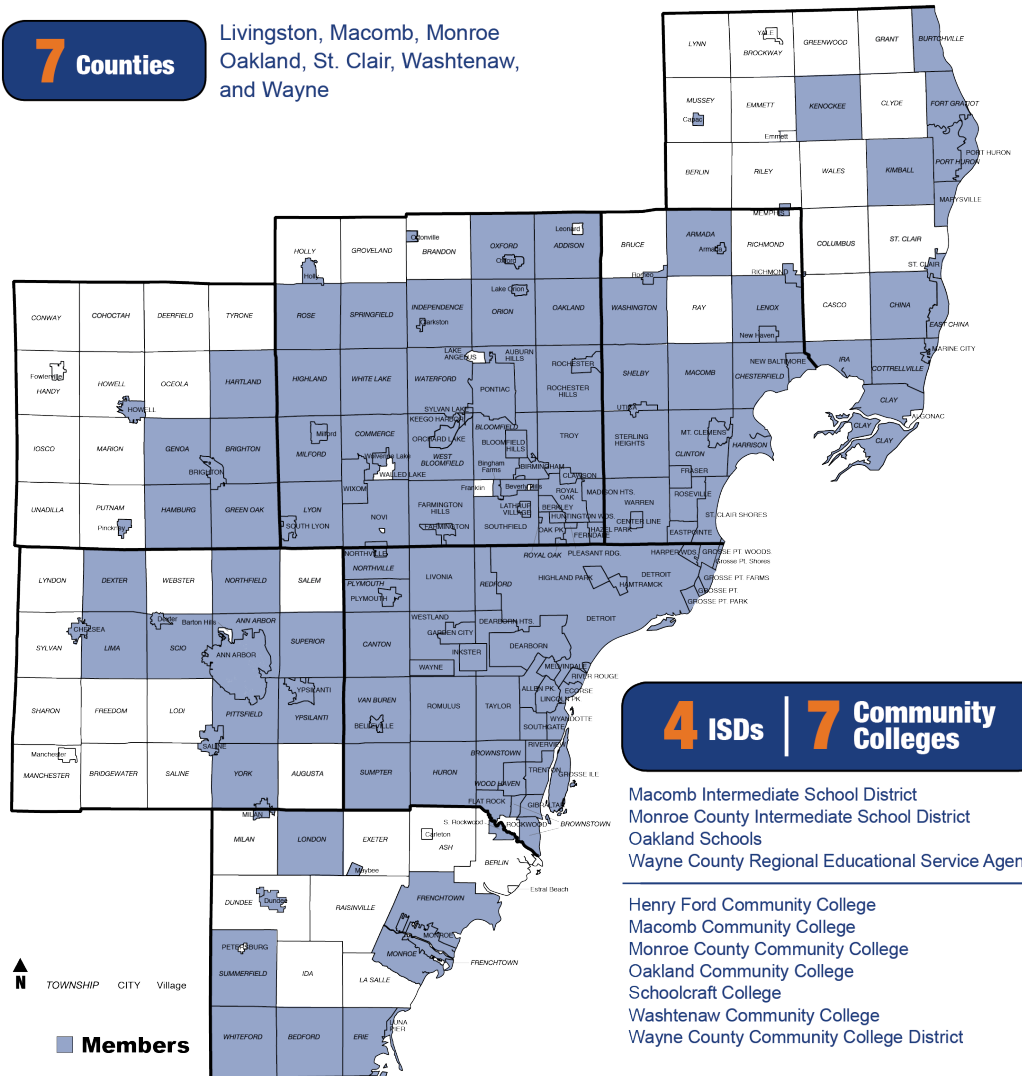
**86** Cities

**16** Villages

**64** Townships

**7** Counties

Livingston, Macomb, Monroe  
Oakland, St. Clair, Washtenaw,  
and Wayne



**4** ISDs | **7** Community Colleges

Macomb Intermediate School District  
Monroe County Intermediate School District  
Oakland Schools  
Wayne County Regional Educational Service Agency

Henry Ford Community College  
Macomb Community College  
Monroe County Community College  
Oakland Community College  
Schoolcraft College  
Washtenaw Community College  
Wayne County Community College District



Scan for more info on SEMCOG member services

Follow us on social media

